

蜗轮蜗杆系列

AND

WORM WHEEL

ESSOR 浙江台玖精密机械股份有限公司
PRECISION MACHINERY INC. ESSOR PRECISION MACHINERY INC.

浙江省嘉兴市桐乡市梧桐街道凤翔东路349号
349, FENGXIANG EAST RD, TONGXING, JIAXING, ZHEJIANG PROVINCE, CHINA
www.essor-cn.com www.essor-drive.com E-mail:sales@essor-cn.com Tel:+86-573-88081238

P 上恆股份有限公司
P&P DRIVE INC.

台中市西屯區工業1路2巷3號4樓之10
4F-10, No. 3, Ln. 2, GongYeh 1St Rd., Xitun Dist., Taichung City 407001, Taiwan
www.pnpdrive.com E-mail:sales@pnpdrive.com Tel:+886-4-23597440-23

行业应用

APPLICATION

数控转台、五轴摇摆头

CNC ROTARY TABLE AND
MILLING HEAD

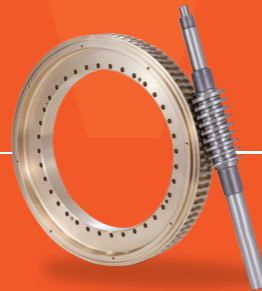


组合式蜗轮蜗杆

WHEELS COMPRISED BY RING
AND PINION SHAFT GEARS

四轴、五轴数控转台

ROTARY TABLE



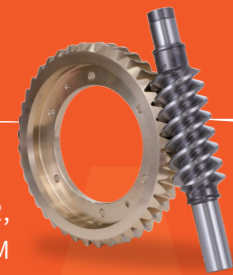
双导程蜗轮蜗杆

DUAL LEAD WORMS AND
WHEELS

高铁、地铁自动扶梯曳

引机, 模切机, 浆料隔膜泵

HIGH-SPEED RAIL AND SUBWAY ESCALATOR,
DIE CUTTING MACHINE, SLURRY DIAPHRAGM
PUMP



尼曼蜗轮蜗杆

ZC WORMS AND WHEELS

刀库减速机

WORM GEARBOXES FOR ATC

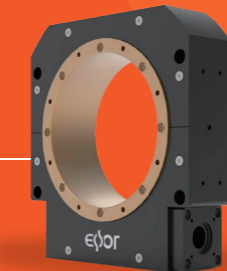


钻攻机换刀机构

ATC FOR TAPPING MACHINE
AND TURNING MACHINE

中空旋转平台

ROTARY STAGES

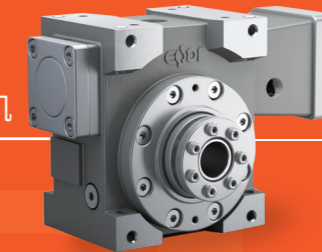


电子、半导体、机床、自动化

ELECTRONICS, MACHINE TOOLS,
SEMICONDUCTORS AND AUTOMATION

合金钢蜗轮双导程减速机

ALLOY STEEL DUAL LEAD
WORM DRIVES



液体罐装、工业自动化

LIQUID FILLING MACHINES AND
AUTOMATION FOR INDUSTRY

工
匠
形
心

应用领域 APPLICATION

广泛应用于数控机床、电梯、印刷、泵阀、食品加工和工业自动化等行业领域

WIDELY APPLIED TO CNC MACHINES, ELEVATORS, ESCALATORS, PRINT,
PUMPS, VALVES AND AUTOMATION, ETC.

精密驱动创新

TECHNOLOGY DRIVES INNOVATION

浙江台玖精密机械股份有限公司，专业生产高精度蜗轮蜗杆、减速机及传动部件，是国家高新技术企业、“专精特新”和“隐形冠军”企业。

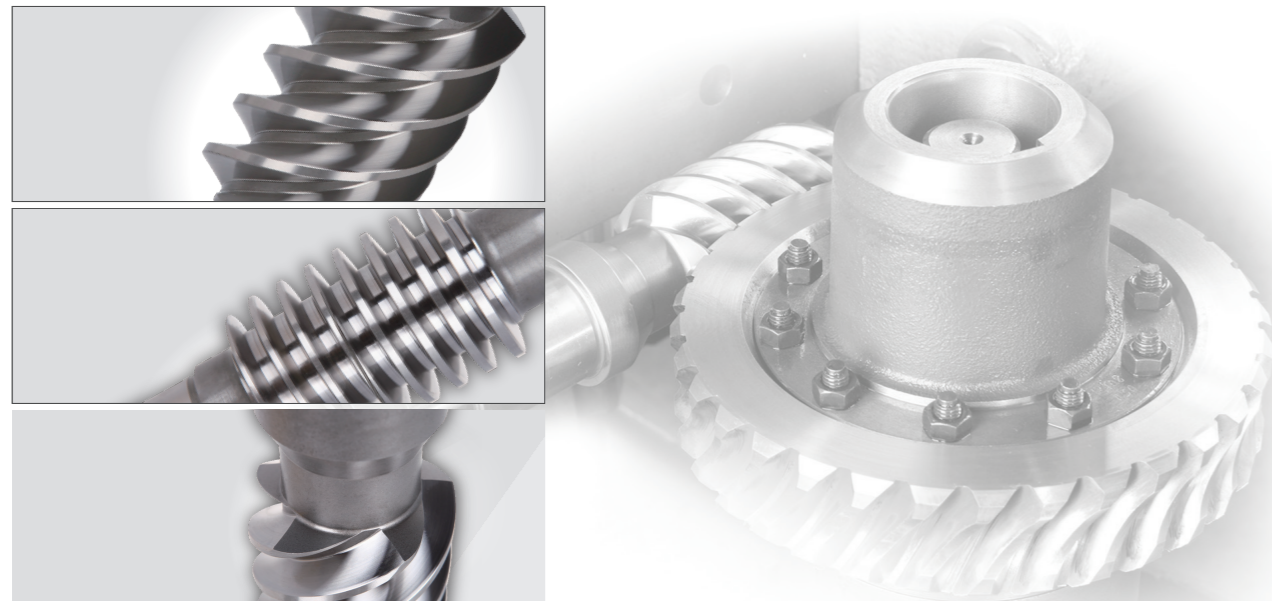
公司生产的普通圆柱蜗轮蜗杆广泛应用于电梯、扶梯、机床、泵阀等不同行业和领域，双导程蜗轮蜗杆则应用于高精度数控机床数控转台和太阳能光热产业，并为特殊需求的减速机客户提供定制化服务，广泛应用于机器人、监控、包装、食品、刀库、机床等行业。主要为欧美、亚洲和国内知名企业提供配套服务。

来自德国的技术与生产理念，创新与研发是公司发展的战略核心。自建有省级研发中心，与知名大学建立产学研合作，以雄厚的技术实力做后盾，为客户提供高质量服务。

Essor Precision Machinery Inc. specializes in the production of high-precision worm gears, reducers and transmission components for turret structure. We are leaders in the high-tech market.

Our cylindrical worm gears are versatile and can be found in a wide range of products such as elevators, escalators, machine tools, and slurry diaphragm pumps, etc. Dual lead worm gears are used in high-precision CNC machines and rotary tables, as well as in the solar power industry. We also produce tailor made reducers that are used in robotics, area scan turret cameras, mobile robot for logistics revolution, automatic liquid filling machine for beverage industry, rotary stages and ATC for turning machines. Our company provides comprehensive services for industries in Europe, America, Asia, and domestically.

Innovation and research are at the core of the company's development strategy. Our development plan is influenced by German technologies and production concepts. Our solid foundations in the high-tech industry allow us to provide excellent services to our customers.



匠心铸造品质 品质源于细节

CRAFTSMANSHIP AND ATTENTION TO DETAIL

行业领先, 国际前沿 Forefront Market Leaders

高端加工设备, 实现蜗轮蜗杆加工精度达到DIN 1级

High-end machining equipment achieves accuracy up to DIN 1.

精益求精, 品质先行 Quality the Top Priority

先进检测装备, 保障产品质量, 量测精度达到DIN 1级

Advanced testing equipment ensures product quality with measuring accuracy DIN 1.

精细管控, 高效赋能 Empowerment by Efficiency

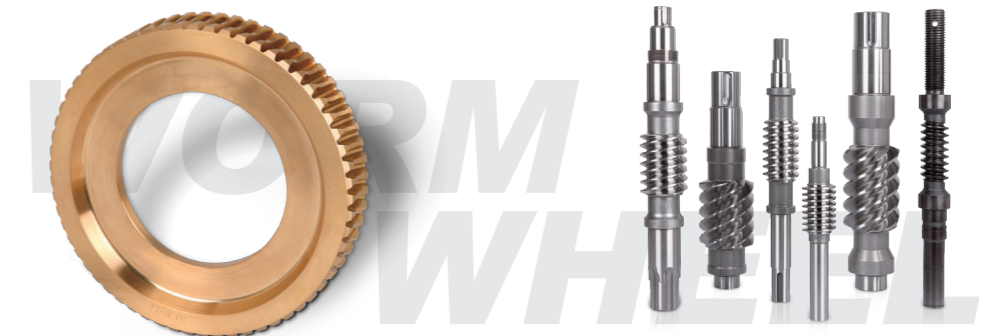
德国TUV ISO9001体系认证, ERP和MES系统管理, 精益生产模式

Certified by the German TUV ISO9001 system. Managements by ERP, MES systems and lean production.

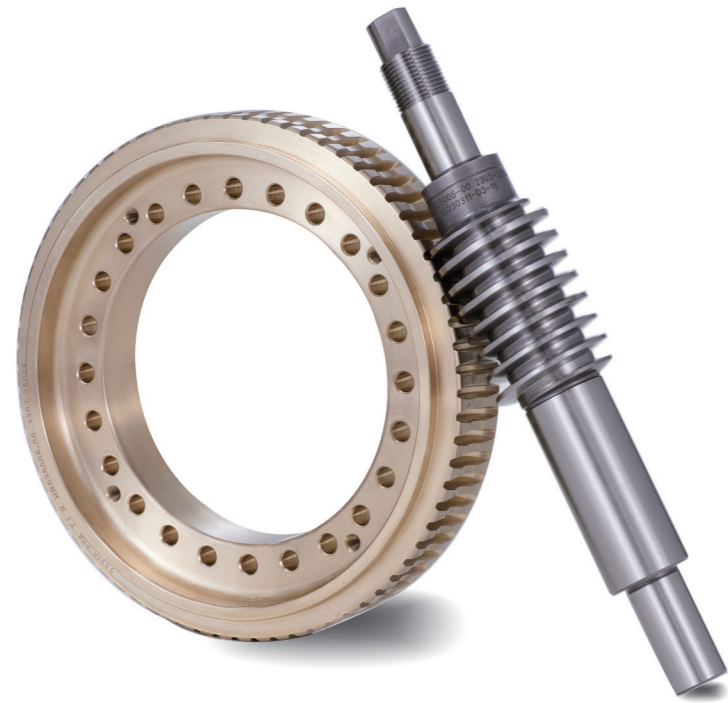
客户至上, 服务为王 Customer Orientation

定制化解决方案, 用诚信塑造品牌, 以质量赢得口碑

Provide customized solutions, building the brand with integrity, and winning a good reputation through high-quality products and services.



双导程蜗轮蜗杆特点 ADVANTAGES OF DUAL LEAD WORMS AND WHEELS



侧隙趋近于零, 反向背隙小, 误差少
Reverse backlash closes to zero.

蜗轮加工精度可达DIN1级
Machining accuracy of wheel is up to DIN 1.

侧隙增大时, 可调整蜗杆轴向位置恢复原有精度
Backlash adjustable to recover the accuracy while wearing down.

尼曼蜗轮蜗杆特点 ADVANTAGES OF ZC WORMS AND WHEELS

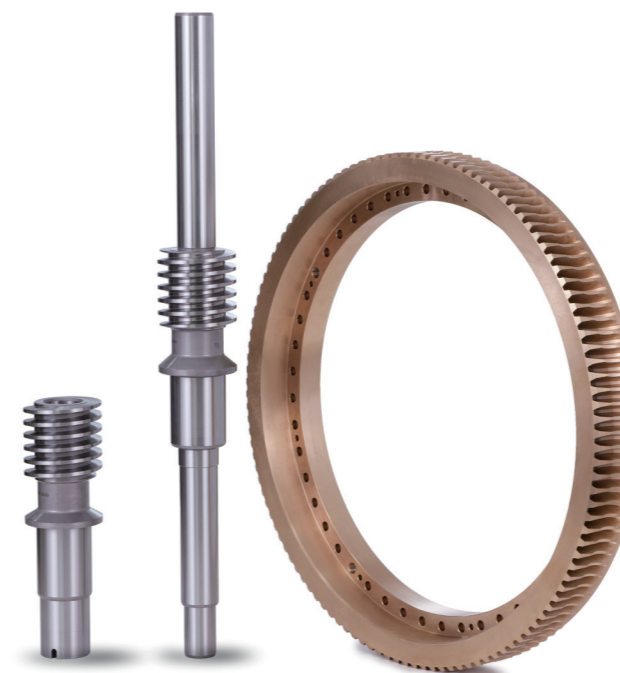


大扭矩、高效率、大承载力及较长的使用寿命
High torque, high efficiency, high overload capability and long service lifetime.

特殊齿形设计, 使蜗杆的凹面与蜗轮的凸面相配合, 保证更好的齿面啮合及极低的齿面压力
Unique gear tooth geometry enables the worm with concave profile coupled with convex shaped gear to ensure better flank meshing.

| 盘面 FACEPLATES | 零件 PARTS | 模数 MODULE | 外径 O.D. | 速比 RATIO | 中心距 CENTER DISTANCE | 蜗杆精度 WORM ACCURACY | 蜗轮精度 WHEEL ACCURACY |
|------------------|-------------|--------------|------------|-------------|------------------------|-----------------------|------------------------|
| 125 | 蜗杆WORM | 1.75 | 29.5 | 1:48 | 55 | DIN5 | DIN2 |
| | 蜗轮WHEEL | | 89.25 | | | | |
| 170 | 蜗杆WORM | 1.75 | 29.5 | 1:72 | 76 | DIN5 | DIN1 |
| | 蜗轮WHEEL | | 131 | 1:36 | | | DIN1 |
| 255 | 蜗杆WORM | 2.5 | 44.8 | 1:72 | 110 | DIN5 | DIN1 |
| | 蜗轮WHEEL | | 187.5 | 1:36 | | | DIN1 |
| 320 | 蜗杆WORM | 3 | 58.134 | 1:72 | 133 | DIN5 | DIN1 |
| | 蜗轮WHEEL | | 224 | 1:36 | | | DIN1 |
| 400 | 蜗杆WORM | 4 | 71 | 1:72 | 174 | DIN5 | DIN2 |
| | 蜗轮WHEEL | | 299 | | | | |
| 500 | 蜗杆WORM | 5 | 70 | 1:72 | 210 | DIN5 | DIN3 |
| | 蜗轮WHEEL | | 375 | | | | |
| 630 | 蜗杆WORM | 5 | 70 | 1:90 | 255 | DIN5 | DIN3 |
| | 蜗轮WHEEL | | 465 | | | | |
| 800 | 蜗杆WORM | 5.5 | 75 | 1:90 | 280 | DIN5 | DIN3 |
| | 蜗轮WHEEL | | 511.5 | | | | |

组合式蜗轮蜗杆特点 ADVANTAGES OF WHEELS COMPRISED BY RING AND PINION SHAFT GEARS



更多齿啮合, 承载更大扭矩
Higher contact ratio to get higher loading torque.

蜗轮加工精度可达DIN1级
Machining accuracy of wheel is up to DIN 1.

侧隙易调节
Backlash is easy adjustable.

实轴驱动蜗轮, 空心轴吸收蜗轮反向冲击力, 保证机床运转平稳
Pinion shaft drives wheel and ring gear absorbs the impact of the wheel to ensure low vibration of the machines.